

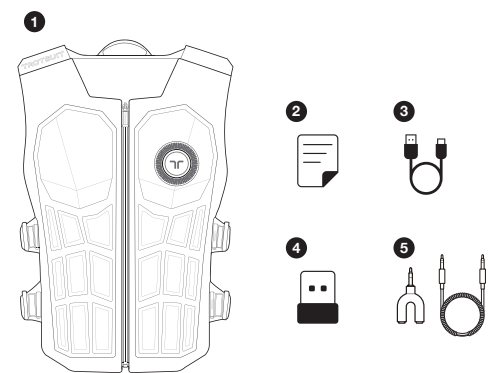


TactSuit Pro

Quick Start Guide

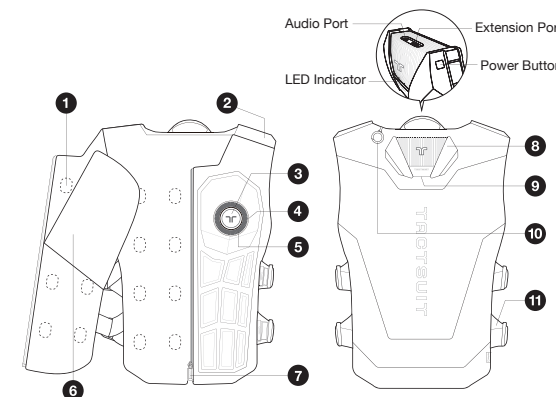


What's in the Box



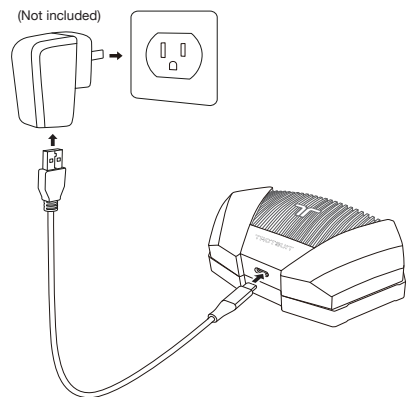
- 1 TactSuit Pro
- 2 Manual
- 3 Charging Cable (USB Type C)
- 4 Bluetooth Dongle
- 5 Audio Accessories (3.5mm AUX cable and Y-Splitter Adapter)

TactSuit Pro



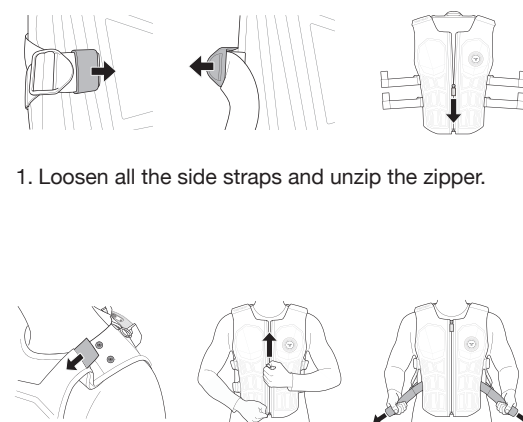
- 1 Haptic Motor * 32
- 2 Shoulder Snap Buttons
- 3 Detachable Badge
- 4 Front Controller
- 5 Front LED Ring
- 6 Mesh Lining
- 7 Zipper
- 8 Back Controller
- 9 Charging Port
- 10 Audio Cable Holder
- 11 Side Straps

Wake Up & Charge



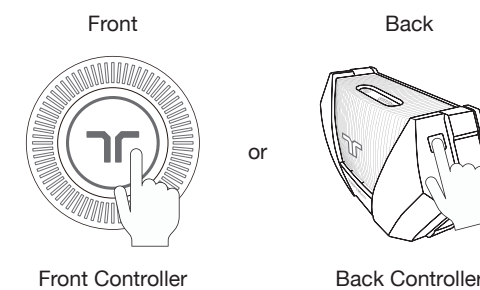
To wake up or charge, plug the charger into the TactSuit Pro.
 ※ Wake Up step is required only when the device is used for the first time.
 ※ Please use a certified charging adapter.

Put On



1. Loosen all the side straps and unzip the zipper.
 2. Adjust the size of your TactSuit Pro to fit your body.

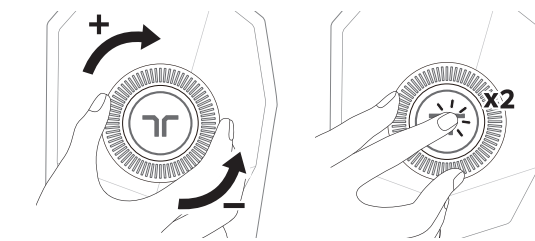
Turn On / Off



The TactSuit Pro features a power button on both the Front Controller and the Back Controller.

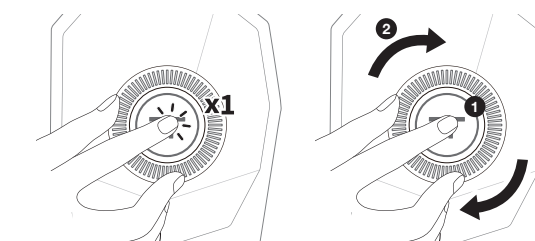
- Turn on : Click the power button
- Turn off : Long press the power button

Front Controller



Intensity Control
Turn the controller wheel clockwise or counter clockwise

Play & Pause
Double click while in use



Activate Pairing Mode
Click the button

Select Audio-to-Haptic Profile
(1) Click and long press the button and (2) turn the controller wheel

Front LED Ring



Pairing Mode
Blinking Blue



Paired
Solid Blue



Audio Cable In
Solid Purple



Audio Cable In & Paired
Solid Purple & Blue



Visualizer Mode
Dynamic Color



Pause
Rotating (Blue or Purple)

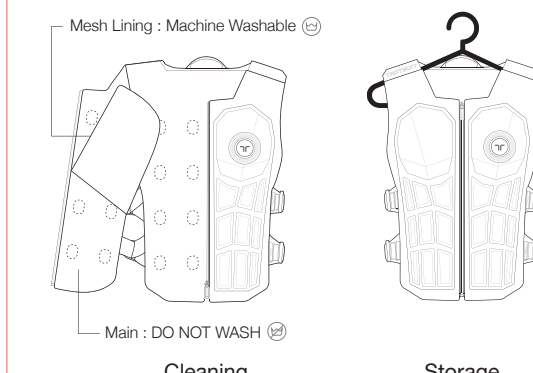


Firmware Updating
Rotating Yellow



Fully Charged
Solid Green

Care



Cleaning Storage

Only the detachable mesh lining is machine washable with neutral detergent. Never wash the main device under any circumstances. Gently wipe it with a soft cloth or tissue. Do not drop the device and avoid leaving it folded or creased. Hang it on a hanger or store it in the original box.



with bHaptics Player for Meta Quest*



bHaptics Player (Meta Quest)

1. Install the bHaptics Player App from the Meta Quest Store.
2. Pair the TactSuit Pro with Meta Quest.
3. Play a Natively Supported Content.

* Make sure to use the latest version.



Setup Guide



Natively Supported Content



with bHaptics Player for PC (Windows)*

1. Install the bHaptics Player for PC (<https://bhaptics.com/software/player>).
2. Launch the bHaptics Player for PC and follow the on-screen guide to pair TactSuit Pro with your Windows PC.
3. Play Natively or MOD** Supported Content.

* Make sure to use the latest version.
 ** Follow additional instructions on the guide page.



Setup Guide



Natively Supported Content



with bHaptics Player for Mobile (app)*



bHaptics Player (iOS/Android)

1. Install the bHaptics Player for Mobile on your mobile phone.
2. Launch the bHaptics Player for Mobile and pair the TactSuit Pro.
3. Connect your mobile device and PS5 to the same router network.
4. Press the Start button and play a Natively Supported Content.

* Make sure to use the latest version.



Setup Guide



Natively Supported Content



with bHaptics Player for PC (Windows)*

1. Install the bHaptics Player for PC (<https://bhaptics.com/software/player>).
2. Launch the bHaptics Player for PC and follow the on-screen guide to pair TactSuit Pro with your Windows PC.
3. Play Natively or MOD** Supported Content.

* Make sure to use the latest version.
 ** Follow additional instructions on the guide page.



Setup Guide

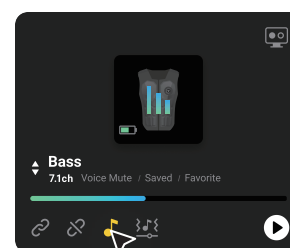


Natively Supported Content

Audio-to-Haptics (Wireless)

For Non-Natively Supported Content
 Windows 10, 11

You can enjoy content that doesn't natively support TactSuit Pro by using the Audio-to-Haptics feature in bHaptics Player for PC, which automatically generates haptic feedback based on the audio of the content.

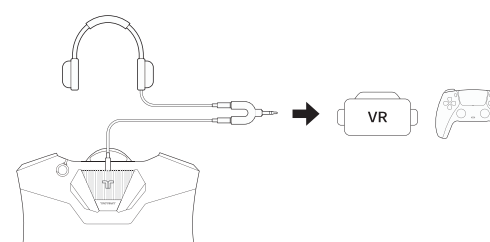


Setup Guide

Audio-to-Haptics (Wired)

For Non-Natively Supported Content

For Meta Quest and PS VR2, you can enjoy Audio-to-Haptics through a wired connection using the provided audio accessories.



Due to safety concerns related to the use of wires, users are recommended to use their TactSuit only via Bluetooth when using the product with a Standalone VR (Meta Quest) or PS VR2.



Setup Guide

Specifications

Product Name	TactSuit Pro
Model Name	BHTV32M1D
Feedback Point	Total 32 (front : 16, rear : 16)
Size	Body : 26 - 50 in. (66 - 127 cm) Length : Closed 22 in. (56 cm) Open 23.5 in. (60 cm)
Playtime	13.5 hours*
Wireless Frequency	2.402 - 2.480 GHz (Bluetooth LE)
Connection Type	Bluetooth Low Energy (BLE), Audio Port, USB
Battery	Li-ion rechargeable battery (3.63V, 9800mAh, 35.574Wh)
Charging	5 hours with 5V 2A (max)

*measured when all feedback points operate at maximum intensity for 1 second every 10 seconds

Developers

<https://bhaptics.com/support/developers>

We offer specialized tools that make it easy and straightforward for developers to create natively supported content.



A web-based haptic authoring tool that allows users to create and customize haptic feedback patterns. <https://designer.bhaptics.com>



A web-based tool that defines content-specific event scenarios and assigns haptic patterns to be delivered when those events occur. <https://developer.bhaptics.com>

SDK

A Software Development Kit designed for easy and swift integration of haptics into content.



Support

Help Center <https://bhaptics.com/support/help>

Warranty <https://bhaptics.com/legals/warranty>



Help Center